



St. Wilfrid's
R.C. College

Psychology Curriculum

*Excellentia per fidem,
per scientiam, per adiuvatum*

Excellence through faith, learning and support

Learning Intentions

To explore the main principle and approaches of psychology and how each one differs in terms of their explanations for the causes of human behaviour.

To study the explanations and treatments of certain mental health conditions (OCD, depression and phobias).

To explore the variety of scientific methods in which to conduct and study human behaviour and how to analyse and interpret such data.

To explore how memories are stored and retrieved and the problems surrounding EWT accounts including possible ways to improve recall.

To explore the fundamentals and nature of human attachment and the consequences on later adult behaviour

To investigate the impact of how others behaviour can affect our own or not.

Learning Intentions

To study the structure of the human brain and how certain brain structures are responsible for specific behaviours as well as knowing how we study the human brain.

To explore the various philosophical debates in psychology

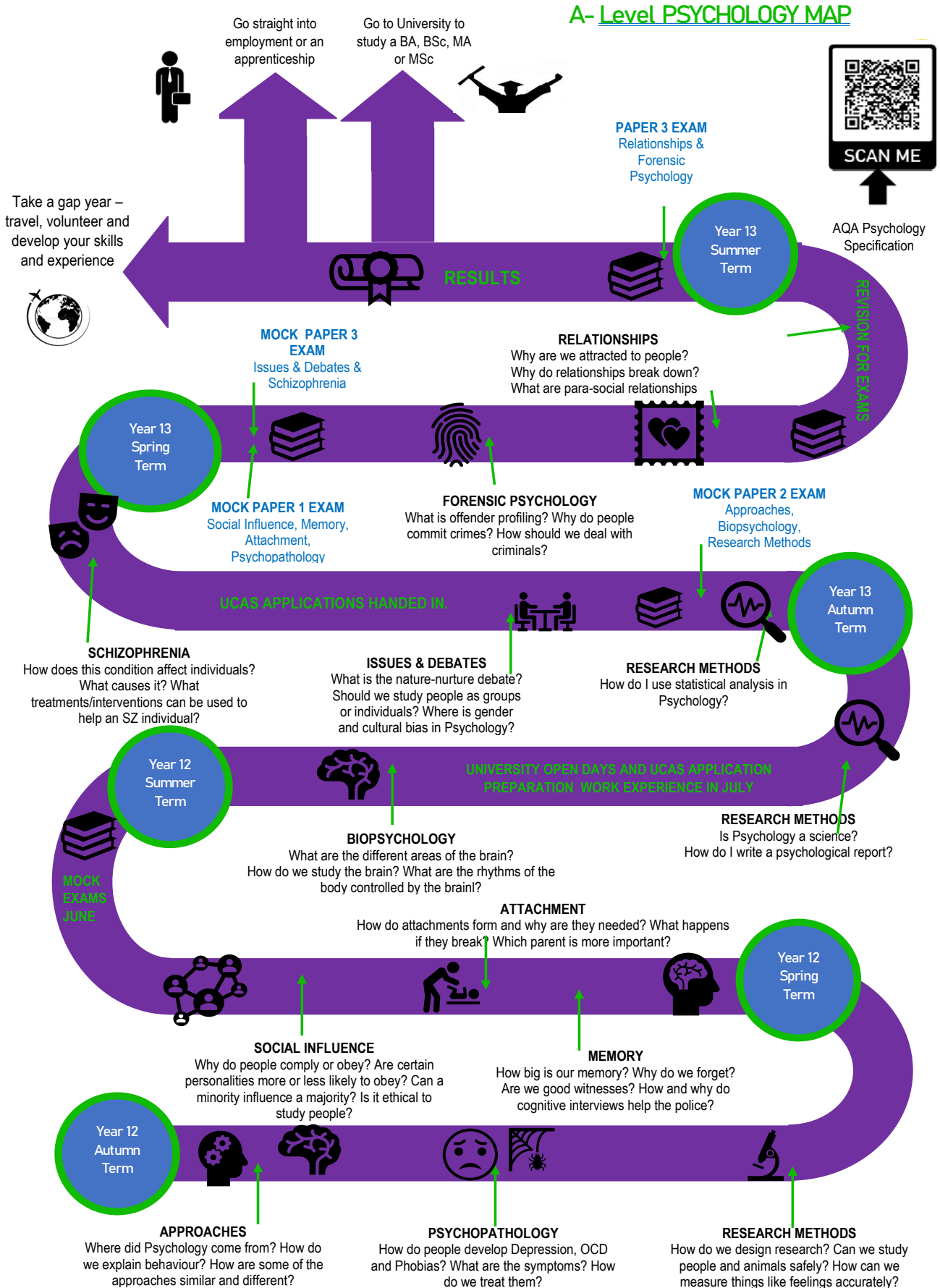
To study in depth the explanations and treatments of Schizophrenia

To explore the many causes of offending behaviour and potential ways in which it could be managed and possibly prevented.

To develop an understanding of the explanations of human relationships and the barriers that people can face in such development.

Psychology at St Wilfrid's

A-Level PSYCHOLOGY MAP



Psychology Skills

1. AO1 - Knowledge

2. AO2 - Application

3. AO3 - Analysis

AQA A Level Psychology

Paper 1: Introductory Topics in Psychology

Written exam: 2 hours
33% of A-level
96 marks

Assessment overview

- Section A – Social Influence: multiple choice, short answer and extended writing, 24 marks
- Section B - Memory: multiple choice, short answer and extended writing, 24 marks
- Section C - Attachment: multiple choice, short answer and extended writing, 24 marks
- Section D - Psychopathology: multiple choice, short answer and extended writing, 24 marks

Paper 2: Psychology in Context

Written exam: 2 hours
33% of A-level
96 marks

Assessment overview

- Section A - Approaches: multiple choice, short answer and extended writing, 24 marks
- Section B - Biopsychology: multiple choice, short answer and extended writing, 24 marks
- Section C – Research Methods: multiple choice, short answer and extended writing, 48 marks

Paper 3: Issues and Options in Psychology

Written exam: 2 hours
33% of A-level
96 marks

Assessment overview

- Section A: multiple choice, short answer and extended writing, 24 marks
- Section B: one topic from option 1, 9–11 above, multiple choice, short answer and extended writing, 24 marks
- Section C: one topic from option 2, 12–14 above, multiple choice, short answer and extended writing, 24 marks
- Section D: one topic from option 3, 15–17 above, multiple choice, short answer and extended writing, 24 marks

Students must:		Approx %
AO1	Demonstrate knowledge and understanding of scientific ideas, processes, techniques and procedures.	35–37
AO2	Apply knowledge and understanding of scientific ideas, processes, techniques and procedures: <ul style="list-style-type: none"> • in a theoretical context • in a practical context • when handling qualitative data • when handling quantitative data. 	32–34
AO3	Analyse, interpret and evaluate scientific information, ideas and evidence, including in relation to issues, to: <ul style="list-style-type: none"> • make judgements and reach conclusions • develop and refine practical design and procedures 	30–32